

MONTHLY ENROLLMENT

ACTON-BOXBOROUGH REGIONAL SCHOOLS 2016-2017

Levels	Sept. 1				Oct. 1				Nov. 1				Dec. 1				Jan. 1				Feb. 1				A
	A	B(1)	C	Tot	A	B(1)	C	Tot	A	B(1)	C	Tot	A	B(1)	C	Tot	A	B(1)	C	Tot	A	B(1)	C	Tot	
Preschool	82	31	3	116	82	31	3	116																	
<b>Preschool Total</b>	<b>82</b>	<b>31</b>	<b>3</b>	<b>116</b>	<b>82</b>	<b>31</b>	<b>3</b>	<b>116</b>																	
<b>K</b>	280	43	7	330	280	43	7	330				0				0								0	
<b>1</b>	264	55	5	324	265	55	4	324				0				0								0	
<b>2</b>	321	47	6	374	317	48	7	372				0				0								0	
<b>3</b>	345	43	8	396	345	43	9	397				0				0								0	
<b>4</b>	347	57	8	412	349	55	8	412				0				0								0	
<b>5</b>	339	65	10	414	339	64	11	414				0				0								0	
<b>6</b>	393	63	9	465	393	63	10	466				0				0								0	
<b>Elem. Sub Total</b>	<b>2289</b>	<b>373</b>	<b>53</b>	<b>2715</b>	<b>2288</b>	<b>371</b>	<b>56</b>	<b>2715</b>																	
<b>Other K-6</b>	17	2	1	20	17	2	1	20				0				0								0	
<b>Elem. Total</b>	<b>2306</b>	<b>375</b>	<b>54</b>	<b>2735</b>	<b>2305</b>	<b>373</b>	<b>57</b>	<b>2735</b>	<b>0</b>	<b>0</b>	<b>0</b>	<b>0</b>	<b>0</b>	<b>0</b>	<b>0</b>	<b>0</b>	<b>0</b>	<b>0</b>	<b>0</b>	<b>0</b>	<b>0</b>	<b>0</b>	<b>0</b>	<b>0</b>	
<b>7</b>	397	66	5	468	397	67	5	469				0				0								0	
<b>8</b>	360	77	4	441	361	77	4	442				0	####	####		0								0	
<b>J.H.S. Total</b>	<b>757</b>	<b>143</b>	<b>9</b>	<b>909</b>	<b>758</b>	<b>144</b>	<b>9</b>	<b>911</b>	<b>0</b>	<b>0</b>	<b>0</b>	<b>0</b>	<b>0</b>	<b>####</b>	<b>0</b>	<b>####</b>	<b>0</b>	<b>0</b>	<b>0</b>	<b>0</b>	<b>0</b>	<b>0</b>	<b>0</b>	<b>0</b>	
<b>9</b>	368	77	7	452	364	77	7	448				0				0								0	
<b>10</b>	406	75	8	489	409	75	8	492				0				0								0	
<b>11</b>	374	78	12	464	368	77	12	457				0				0								0	
<b>12</b>	391	75	6	472	390	73	6	469				0				0								0	
<b>9-12 Ungr.</b>	0	1	0	1	0	1	0	1				0				0								0	
<b>P.G.</b>	0	0	0	0	0	0	0	0				0				0								0	
<b>H.S. Total Secondary Total</b>	<b>1539</b>	<b>306</b>	<b>33</b>	<b>1878</b>	<b>1531</b>	<b>303</b>	<b>33</b>	<b>1867</b>	<b>0</b>	<b>0</b>	<b>0</b>	<b>0</b>	<b>0</b>	<b>0</b>	<b>0</b>	<b>0</b>	<b>0</b>	<b>0</b>	<b>0</b>	<b>0</b>	<b>0</b>	<b>0</b>	<b>0</b>	<b>0</b>	
<b>Other7-12</b>	59	11	2	72	59	11	2	72				0				0								0	
<b>Reg. Total</b>	<b>2355</b>	<b>460</b>	<b>44</b>	<b>2859</b>	<b>2348</b>	<b>458</b>	<b>44</b>	<b>2850</b>	<b>0</b>	<b>0</b>	<b>0</b>	<b>0</b>	<b>0</b>	<b>0</b>	<b>0</b>	<b>0</b>	<b>0</b>	<b>0</b>	<b>0</b>	<b>0</b>	<b>0</b>	<b>0</b>	<b>0</b>	<b>0</b>	
<b>Preschool Total</b>	<b>82</b>	<b>31</b>	<b>3</b>	<b>116</b>	<b>82</b>	<b>31</b>	<b>3</b>	<b>116</b>																	
<b>Elem Total Secondary Total</b>	<b>2306</b>	<b>375</b>	<b>54</b>	<b>2735</b>	<b>2305</b>	<b>373</b>	<b>57</b>	<b>2735</b>	<b>0</b>	<b>0</b>	<b>0</b>	<b>0</b>	<b>0</b>	<b>0</b>	<b>0</b>	<b>0</b>	<b>0</b>	<b>0</b>	<b>0</b>	<b>0</b>	<b>0</b>	<b>0</b>	<b>0</b>	<b>0</b>	
<b>Grand Total</b>	<b>4743</b>	<b>866</b>	<b>98</b>	<b>5707</b>	<b>4735</b>	<b>862</b>	<b>104</b>	<b>5701</b>	<b>0</b>	<b>0</b>	<b>0</b>	<b>0</b>	<b>0</b>	<b>0</b>	<b>0</b>	<b>0</b>	<b>0</b>	<b>0</b>	<b>0</b>	<b>0</b>	<b>0</b>	<b>0</b>	<b>0</b>	<b>0</b>	

A = ACTON Pre-School In D. = In District Distribution  
 B = BOXBOROUGH P.G. = Post Graduates  
 C = Choice/Staff/Tuitic Ungr. = Ungraded  
 Other = Out of District

G. Brand C. Jeannotte  
 M. Altieri A. Bisewicz  
 D. Bookis K. Nelson  
 D. Bentley E. Weiner  
 S. Cunningham

All Principals (2)

Students other than Choice counted under column C:  
 Staff Students -  
 Tuition In Students -

REV: 11/1/2016

Actual Acton-Boxborough Grade K-6  
October 1st 2016

Grade	Blanchard				Total	Conant				Total	Douglas				Total	Gates				Total	McCarthy				Total	Merriam				Incoming	Total	#Sec.	Avg. Size
	46 ADK	14 AM	19 20 3 4	14 0		36 ADK	22 AM	29 ADK	17 AM		23 23	46	21 ADK	19 AM		21 19	40	43 ADK	20 AM		21 ADK	22 AM	21 20	63		42 ADK	21 AM	21 21	21 21				
K	19	20	14	60	18	18	22	58	23	23	46	21	19	40	21	22	20	63	21	21	21	63	0	330	12	27.5							
Rm	216/ 217	218/ 217	226	18	1	2	3	0	2	1	1	4	2	1	111	112	110	2	131	132	135	0	22										
Gr. 1	10	20	20	51	20	20	40	20	20	19	59	19	19	19	57	19	19	20	58	19	20	20	59	0	324	17	19.1						
Rm	215	213	211	1	5	4	1	5	4	3	1	3	5	6	2	310	311	312	0	223	224	234	1	6									
Gr. 2	10	21	21	53	23	22	45	23	23	23	69	23	23	22	68	23	23	22	68	22	24	23	69	0	372	16	23.3						
Rm	215/ 217	227	219	13	6	7	1	7	6	8	5	7	8	10	1	301	302	303	2	133	231	334	1	23									
Gr. 3	23	22	45	25	25	25	75	24	24	24	72	25	25	50	24	24	23	71	21	20	21	22	84	0	397	17	23.4						
25	229	231	4	9	10	17	2	9	10	11	0	20	9	0	313	314	315	2	100	233	322	323	1	9									
Gr. 4	19	22	22	63	23	23	22	90	22	23	23	68	23	22	45	24	24	24	72	25	25	24	74	0	412	18	22.9						
Rm	245	243	247	9	8	20	19	18	0	12	14	13	0	15	19	2	213	214	215	3	230	330	331	0	14								
Gr. 5	24	22	24	70	24	22	22	68	22	23	23	68	24	23	70	23	22	24	69	23	23	23	69	0	414	18	23.0						
Rm	118	130	128	7	16	15	14	2	21	20	19	1	11	17	18	0	210	211	212	4	235	321	324	0	14								
Gr. 6	23	23	24	70	25	25	25	75	24	25	25	74	25	25	74	25	24	25	74	25	24	25	99	0	466	19	24.5						
Rm	110	112	108	10	13	12	11	2	16	17	15	1	12	13	14	1	113	114	115	2	232	332	333	335	0	16							
				62				8			9			7			15					3		104									
<b>Total</b>	<b>20 Sec.</b>	<b>Average 21.7</b>	<b>412</b>	<b>20 Sec.</b>	<b>Average 22.6</b>	<b>451</b>	<b>20 Sec.</b>	<b>Average 22.8</b>	<b>456</b>	<b>18 Sec.</b>	<b>Average 22.4</b>	<b>404</b>	<b>21 Sec.</b>	<b>Average 22.6</b>	<b>475</b>	<b>23 Sec.</b>	<b>Average 22.5</b>	<b>517</b>	<b>0</b>	<b>2715</b>	<b>117</b>	<b>23.21</b>											

62 Acton residents attend Boxborough  
42 Boxborough residents attend school in Acton



**October 1st, 2016  
Non-Resident  
Column C Breakdown**

Grade	Staff Free	Choice	Other	Total Staff/ Choice tuition
K	6	1	0	7
1	4	0	0	4
2	6	1	0	7
3	7	2	0	9
4	4	4	0	8
5	6	5	0	11
6	8	2	0	10
<b>Elem. Total</b>	<b>41</b>	<b>15</b>	<b>0</b>	<b>56</b>
7	5	0		5
8	2	2		4
<b>7-8 Total</b>	<b>7</b>	<b>2</b>	<b>0</b>	<b>9</b>
9	3	4		7
10	3	4	1	8
11	4	4	4	12
12	1	5		6
UG				0
<b>9-12 Total</b>	<b>11</b>	<b>17</b>	<b>5</b>	<b>33</b>
<b>Out of District Total</b>				
<b>Grand Total</b>	<b>59</b>	<b>34</b>	<b>5</b>	<b>98</b>

\*Other incl: Foreign Exchange Students/ Tuition In

**Acton-Boxborough Regional School District**  
**October 1, 2016**

Grade	Acton	Boxborough	Non-Resident	Total
K	280	43	7	330
1	265	55	4	324
2	317	48	7	372
3	345	43	9	397
4	349	55	8	412
5	339	64	11	414
6	393	63	10	466
7	397	67	5	469
8	361	77	4	442
9	364	77	7	448
10	409	75	8	492
11	368	77	12	457
12	390	73	6	469
Ungraded		1		1
Post-Grads				0
Other K-12	76	13	3	92
<b>Total</b>	<b>4653</b>	<b>831</b>	<b>101</b>	<b>5585</b>

Acton Enrollment	4653
Boxborough Enrollment	831
Total Acton /Boxborough	5484
Acton %	84.85%
Boxborough %	15.15%
Total Percentage	100.00%

\*Non-Residents include: Choice, Staff Children and Tuition-in

Rev, 10/18/2016



Demographics October 1st, 2016

School	# of Students	African American/ Black	Asian	Hispanic or Latino	Multi Race, Non-Hispanic	Native American	Hawaiian or Other Pacific	White	Total %
		%	%	%	%	%	%	%	%
Blanchard	412	1.70%	33.25%	3.16%	2.91%	0.49%	0.00%	58.50%	100.00%
Conant	451	2.88%	60.75%	4.21%	2.66%	0.00%	0.00%	29.49%	100.00%
Douglas	456	0.22%	24.34%	3.29%	6.14%	0.22%	0.00%	65.79%	100.00%
Gates	404	1.73%	50.99%	3.47%	2.97%	0.99%	0.00%	39.85%	100.00%
McCarthy-Towne	475	3.37%	11.37%	9.05%	5.47%	0.63%	0.00%	70.11%	100.00%
Merriam	517	2.51%	20.50%	5.42%	3.29%	0.00%	0.19%	68.09%	100.00%
<b>Total Elementary</b>	<b>2715</b>	<b>2.10%</b>	<b>32.71%</b>	<b>4.86%</b>	<b>3.94%</b>	<b>0.37%</b>	<b>0.04%</b>	<b>55.99%</b>	<b>100.00%</b>
JHS	911	1.98%	31.83%	3.73%	5.60%	0.11%	0.00%	56.75%	100.00%
SHS	1867	1.50%	28.12%	3.43%	3.70%	0.16%	0.00%	63.10%	100.00%
<b>Total JHS &amp; SHS</b>	<b>2778</b>	<b>1.66%</b>	<b>29.34%</b>	<b>3.53%</b>	<b>4.32%</b>	<b>0.14%</b>		<b>61.02%</b>	<b>100.00%</b>
<b>Grand Total</b>	<b>5493</b>	<b>1.88%</b>	<b>31.00%</b>	<b>4.19%</b>	<b>4.13%</b>	<b>0.25%</b>	<b>0.02%</b>	<b>58.53%</b>	<b>100.00%</b>

## Students Economically Disadvantaged October 1st, 2016

School	Number of Students in school	Students Economically disadvantaged	% of Economically disadvantaged
Blanchard	412	44	10.68%
Conant	451	46	10.20%
Douglas	456	29	6.36%
Gates	404	44	10.89%
McCarthy-Towne	475	60	12.63%
Merriam	517	47	9.09%
<b>Total Elementary</b>	<b>2715</b>	<b>270</b>	<b>9.94%</b>
JHS	911	73	8.01%
SHS	1867	143	7.66%
<b>Total JHS &amp; SHS</b>	<b>2778</b>	<b>216</b>	<b>7.78%</b>
<b>Grand Total</b>	<b>5493</b>	<b>486</b>	<b>8.85%</b>

Rev. 10/18/2016



**Emergent Bilingual/ English Language Learners  
October 1st, 2016**

School	Number of Students in school	ELL Students	% of ELL Students
Blanchard	412	13	3.16%
Conant	451	59	13.08%
Douglas	456	31	6.80%
Gates	404	40	9.90%
McCarthy-Towne	475	35	7.37%
Merriam	517	27	5.22%
<b>Total Elementary</b>	<b>2715</b>	<b>205</b>	<b>7.55%</b>
JHS	911	16	1.76%
SHS	1867	17	0.91%
<b>Total JHS &amp; SHS</b>	<b>2778</b>	<b>33</b>	<b>1.19%</b>
<b>Grand Total</b>	<b>5493</b>	<b>238</b>	<b>4.33%</b>

Rev11/1/2016

**Count Comparison 2014-2016**

Levels	Oct. 1, 2014				Oct. 1, 2015				Oct. 1, 2016			
	A	B (1)	C	Tot	A	B	C	Tot	A	B	C	Tot
<i>Preschool</i>	98	23	0	121	95	30	0	125	82	31	3	116
<b>Preschool Total</b>	<b>98</b>	<b>23</b>	<b>0</b>	<b>121</b>	<b>95</b>	<b>30</b>	<b>0</b>	<b>125</b>	<b>82</b>	<b>31</b>	<b>3</b>	<b>116</b>
<i>K</i>	275	38	7	320	245	49	5	299	280	43	7	330
<i>1</i>	303	37	7	347	304	46	7	357	265	55	4	324
<i>2</i>	314	45	8	367	323	42	7	372	317	48	7	372
<i>3</i>	325	59	11	395	331	54	8	393	345	43	9	397
<i>4</i>	377	55	8	440	331	64	10	405	349	55	8	412
<i>5</i>	377	58	5	440	379	56	8	443	339	64	11	414
<i>6</i>	356	76	4	436	387	62	4	453	393	63	10	466
<b>Sub Total</b>	<b>2327</b>	<b>368</b>	<b>50</b>	<b>2745</b>	<b>2300</b>	<b>373</b>	<b>49</b>	<b>2722</b>	<b>2288</b>	<b>371</b>	<b>56</b>	<b>2715</b>
<i>Other K-6</i>	21	6	0	27	20	4	1	25	17	2	1	20
<b>Pre-K/Elem Total</b>	<b>2348</b>	<b>374</b>	<b>50</b>	<b>2772</b>	<b>2320</b>	<b>377</b>	<b>50</b>	<b>2747</b>	<b>2305</b>	<b>373</b>	<b>57</b>	<b>2735</b>
<i>7</i>	354	68	6	428	364	77	4	445	397	67	5	469
<i>8</i>	400	73	6	479	364	72	7	443	361	77	4	442
<b>J.H.S. Total</b>	<b>754</b>	<b>141</b>	<b>12</b>	<b>907</b>	<b>728</b>	<b>149</b>	<b>11</b>	<b>888</b>	<b>758</b>	<b>144</b>	<b>9</b>	<b>911</b>
<i>9</i>	372	76	9	457	404	78	7	489	364	77	7	448
<i>10</i>	400	71	8	479	369	78	10	457	409	75	8	492
<i>11</i>	404	75	7	486	397	79	7	483	368	77	12	457
<i>12</i>	393	82	8	483	399	73	8	480	390	73	6	469
<i>9-12 Ungr.</i>	0	0	0	0	0	0	0	0	0	1	0	1
<i>P.G.</i>	0	0	0	0	0	0	0	0	0	0	0	0
<b>H.S. Total</b>	<b>1569</b>	<b>304</b>	<b>32</b>	<b>1905</b>	<b>1569</b>	<b>308</b>	<b>32</b>	<b>1909</b>	<b>1531</b>	<b>303</b>	<b>33</b>	<b>1867</b>
<b>Total JHS &amp; HS</b>	<b>2323</b>	<b>445</b>	<b>44</b>	<b>2812</b>	<b>2297</b>	<b>457</b>	<b>43</b>	<b>2797</b>	<b>2289</b>	<b>447</b>	<b>42</b>	<b>2778</b>
<i>Other 7-12</i>	57	9	1	67	59	6	1	66	59	11	2	72
<b>Sec. Total</b>	<b>2380</b>	<b>454</b>	<b>45</b>	<b>2879</b>	<b>2356</b>	<b>463</b>	<b>44</b>	<b>2863</b>	<b>2348</b>	<b>458</b>	<b>44</b>	<b>2850</b>
<b>Preschool Total</b>	<b>98</b>	<b>23</b>	<b>0</b>	<b>121</b>	<b>95</b>	<b>30</b>	<b>0</b>	<b>125</b>	<b>82</b>	<b>31</b>	<b>3</b>	<b>116</b>
<b>Elem Total</b>	<b>2348</b>	<b>374</b>	<b>50</b>	<b>2772</b>	<b>2320</b>	<b>377</b>	<b>50</b>	<b>2747</b>	<b>2305</b>	<b>373</b>	<b>57</b>	<b>2735</b>
<b>Sec. Total</b>	<b>2380</b>	<b>454</b>	<b>45</b>	<b>2879</b>	<b>2356</b>	<b>463</b>	<b>44</b>	<b>2863</b>	<b>2348</b>	<b>458</b>	<b>44</b>	<b>2850</b>
<b>Grand Total</b>	<b>4826</b>	<b>851</b>	<b>95</b>	<b>5772</b>	<b>4771</b>	<b>870</b>	<b>94</b>	<b>5735</b>	<b>4735</b>	<b>862</b>	<b>104</b>	<b>5701</b>

REV: 10/18/2016



# Three Year Comparison K through 12: 2014-2016

<b>Grade Year --&gt;</b>	<i>Gr. K-12 2014</i>	<i>Gr. K-12 2015</i>	<i>Gr. K-12 2016</i>	<i>Total 3 Years</i>	<i>Average 3 Years</i>
<b>Acton Enrollment</b>	4728	4676	4653	14057	4685.67
<b>Boxborough Enrollment</b>	828	840	831	2499	833.00
<b>Total</b>	5556	5516	5484	16556	5518.67
<b>Acton %</b>	85.10%	84.77%	84.85%	84.91%	84.91%
<b>Boxborough %</b>	14.90%	15.23%	15.15%	15.09%	15.09%
<b>Total</b>	100.00%	100.00%	100.00%	100.00%	100.00%
<b>Source 2014 10/1 Report</b>	<i>Elem</i>	<i>Secondary</i>	<i>Total</i>		
<b>Acton</b>	2348	2380	4728		
<b>Boxborough</b>	374	454	828		
	2722	2834	5556		
<b>Source 2015 10/1 Report</b>					
<b>Acton</b>	2322	2356	4676		
<b>Boxborough</b>	377	463	840		
	2699	2819	5516		
<b>Source 2016 10/1 Report</b>					
<b>Acton</b>	2290	2290	4580		
<b>Boxborough</b>	371	447	818		
	2661	2737	5398		

REV:10/18/2016

**Three Year Comparison**  
**7 through 12: October 1st, 2016**

	<i>Gr. 7-12</i>	<i>Gr. 7-12</i>	<i>Gr. 7-12</i>	<i>Total</i>	<i>Average</i>
Year -->	<i>2014</i>	<i>2015</i>	<i>2016</i>	<i>3 Years</i>	<i>3 Years</i>
Acton Enrollment	2380	2356	2348	7084	2361.33
Boxborough Enrollment	454	463	458	1375	458.33
<b>Total</b>	<b>2834</b>	<b>2819</b>	<b>2806</b>	<b>8459</b>	<b>2819.67</b>
Acton %	83.98%	83.58%	83.68%	83.75%	83.75%
Boxborough %	16.02%	16.42%	16.32%	16.25%	16.25%
<b>Total</b>	<b>100.00%</b>	<b>100.00%</b>	<b>100.00%</b>	<b>100.00%</b>	<b>100.00%</b>

Rev: 10/18/2016



Minuteman Applied Arts and Sciences  
October 1, 2016

GRADE	10/00	10/1	10/2	10/3	10/3	10/3	10/3	10/7	10/7	10/1	10/10	10/11	10/12	10/12	10/14	10/15
9	12	8	9	12	6	11	3	8	7	2	7	10	3	6	6	9
10	10	8	6	11	11	8	11	4	6	9	2	7	10	2	9	8
11	11	9	6	7	9	9	10	10	2	7	9	1	5	10	1	10
12	8	8	13	6	6	9	9	9	9	1	5	7	0	7	10	2
PG	6	9	4	2	2	0	4	1	4	3	0	0	0	0	0	2
<b>ACTON</b>																
<b>TOTAL</b>	<b>47</b>	<b>42</b>	<b>38</b>	<b>38</b>	<b>34</b>	<b>37</b>	<b>37</b>	<b>32</b>	<b>28</b>	<b>22</b>	<b>23</b>	<b>25</b>	<b>18</b>	<b>25</b>	<b>26</b>	<b>31</b>
9	2	3	1	5	4	2	3	2	6	1	2	0	3	0	2	0
10	1	4	2	2	6	4	2	3	2	7	1	1	0	3	0	2
11	1	1	2	2	1	4	4	2	3	2	7	1	1	0	2	1
12	2	2	1	2	2	1	3	4	2	4	2	5	1	1	0	2
PG	0	0	2	3	1	3	0	0	0	0	0	0	0	0	0	1
<b>OXBOROUGH</b>																
<b>TOTAL</b>	<b>6</b>	<b>10</b>	<b>8</b>	<b>14</b>	<b>14</b>	<b>14</b>	<b>12</b>	<b>11</b>	<b>13</b>	<b>14</b>	<b>12</b>	<b>7</b>	<b>5</b>	<b>4</b>	<b>4</b>	<b>6</b>
<b>GRAND</b>																
<b>TOTAL</b>	<b>53</b>	<b>52</b>	<b>46</b>	<b>52</b>	<b>48</b>	<b>51</b>	<b>49</b>	<b>43</b>	<b>41</b>	<b>36</b>	<b>35</b>	<b>32</b>	<b>23</b>	<b>29</b>	<b>31</b>	<b>37</b>

EARLY CHILDHOOD STUDENT POPULATION MONTHLY REPORTING PROJECTIONS  
 Acton-Boxborough Regional Schools  
 October 1, 2016

	September 1st, 2016	October 1st, 2016	Additions/ Subtractions October 1, 2016	Final Total As of October 1, 2016	2017 End of Year Projection**
Special Education ( In District) 3- 5 Year olds - Acton	25	25	0	25	46
Special Education (In-District) 3- 5 Year Olds - Boxborough	6	6	0	6	14
<b>Special Education Students in Class</b>	31	31	0	31	60
Itinerant - Acton	13	13	1	14	20
Itinerant - Boxborough	1	1	0	1	5
Other - Acton Preschool	2	2	-1	1	2
<b>Special Education Total</b>	47	47	0	47	87-92
Tuition Students - Acton ( In- District)	42	42	0	42	48
Tuition Students - Boxborough (In-District)	24	24	0	24	25
<b>TOTAL</b>	113	113	+1-1	113	160**
Choice Students	3	3	0	3	3

The school district must ensure that programs are available for eligible students 3 and 4 years of age . The programs must be developmentally appropriate and located in a setting that includes students with and without disabilities (State Requirement 603 CMR 28.06 (7) and Federal Requirement 34 CFR 300.101 (b); 300.124(b); 300.323 (b))

\*\* Projections may be impacted by move-ins and /or Department of public Health referrals.



# Acton-Boxborough Regional School District Enrollment Projections – October 2016

## Acton

PUBLIC SCHOOL ENROLLMENT PROJECTIONS									
Elementary School									
Acton, MA: 2005-2028									
Year	K-12	K	1	2	3	4	5	6	Total
2005*	4,654	308	352	359	372	380	375	370	2,516
2006*	4,712	305	315	371	375	375	387	390	2,518
2007*	4,762	292	320	340	389	394	382	397	2,514
2008*	4,773	301	326	336	349	381	404	384	2,481
2009*	4,830	334	333	349	358	359	391	407	2,531
2010*	4,815	320	347	342	344	369	360	394	2,476
2011*	4,760	294	333	354	351	351	369	361	2,413
2012*	4,768	267	312	348	382	354	354	382	2,399
2013*	4,713	281	302	316	365	375	355	358	2,352
2014*	4,650	275	303	314	325	377	377	356	2,327
2015*	4,597	245	304	323	331	331	379	387	2,300
2016*	4,577	280	265	317	345	349	339	393	2,288
2017	4,514	251	308	276	333	353	352	346	2,217
2018	4,437	214	276	320	289	340	356	359	2,154
2019	4,368	265	235	287	336	296	343	363	2,124
2020	4,306	226	291	245	301	343	299	350	2,055
2021	4,299	283	249	303	257	308	347	304	2,050
2022	4,220	246	311	259	318	262	311	353	2,060
2023	4,146	254	271	324	272	325	265	317	2,026
2024	4,123	257	279	281	340	277	328	270	2,032
2025	4,090	262	282	290	296	347	280	334	2,091
2026	4,063	269	287	294	305	302	351	286	2,093
2027	4,059	277	296	299	308	311	305	357	2,154
2028	4,108	285	304	308	314	315	314	311	2,151

PUBLIC SCHOOL ENROLLMENT PROJECTIONS			
Junior School			
Acton, MA: 2005-2028			
Year	7	8	Total
2005*	391	351	742
2006*	382	400	782
2007*	395	381	776
2008*	402	407	809
2009*	393	402	795
2010*	395	401	796
2011*	391	408	799
2012*	375	396	771
2013*	389	376	765
2014*	354	400	754
2015*	364	364	728
2016*	397	361	758
2017	398	402	801
2018	350	404	754
2019	364	355	719
2020	368	369	737
2021	355	372	727
2022	309	359	668
2023	358	312	671
2024	321	363	684
2025	274	325	599
2026	339	277	616
2027	289	343	632
2028	362	293	655

PUBLIC SCHOOL ENROLLMENT PROJECTIONS					
High School					
Acton, MA: 2005-2028					
Year	9	10	11	12	Total
2005*	368	361	341	326	1396
2006*	345	364	369	334	1412
2007*	391	345	366	370	1472
2008*	385	394	342	362	1483
2009*	402	382	383	337	1504
2010*	402	390	370	381	1543
2011*	385	415	387	361	1548
2012*	408	392	419	379	1598
2013*	394	404	393	405	1596
2014*	372	400	404	393	1569
2015*	404	369	397	399	1569
2016*	364	409	368	390	1531
2017	360	365	408	362	1496
2018	401	361	364	402	1529
2019	403	402	361	358	1524
2020	354	404	402	355	1515
2021	368	355	403	395	1522
2022	372	369	355	397	1492
2023	359	373	368	349	1449
2024	312	360	372	363	1406
2025	362	313	359	366	1400
2026	325	363	312	353	1353
2027	277	325	363	307	1272
2028	343	277	325	357	1302

Excludes choice

# Boxborough

PUBLIC SCHOOL ENROLLMENT PROJECTIONS									
Elementary School									
Boxborough, MA: 2005-2028									
Year	K-12	K	1	2	3	4	5	6	Total
2005*	1,152	67	74	67	75	96	84	88	551
2006*	1,126	60	67	76	68	76	95	87	529
2007*	1,102	54	70	69	72	68	76	95	504
2008*	1,078	58	57	72	71	70	72	77	477
2009*	1,030	45	59	60	66	74	74	73	451
2010*	1,005	48	54	66	61	68	73	70	440
2011*	952	51	49	53	66	60	72	77	428
2012*	897	43	52	51	53	63	65	72	399
2013*	858	35	43	53	55	57	69	64	376
2014*	813	38	37	45	59	55	58	76	368
2015*	830	49	46	42	54	64	56	62	373
2016*	817	43	55	48	43	55	64	63	371
2017	815	42	47	58	53	45	57	68	370
2018	822	52	46	50	64	55	46	61	374
2019	807	33	57	48	55	67	57	50	367
2020	809	53	36	60	53	58	70	61	391
2021	800	42	58	38	66	56	60	74	394
2022	804	48	46	62	42	69	58	64	388
2023	813	50	53	48	68	44	72	62	396
2024	819	53	55	56	53	71	45	77	410
2025	838	57	58	59	62	56	73	49	413
2026	875	59	62	62	65	64	58	78	448
2027	901	62	65	66	68	68	66	62	456
2028	917	65	68	69	73	71	70	71	487

PUBLIC SCHOOL ENROLLMENT PROJECTIONS			
Junior High			
Boxborough, MA: 2005-2028			
Year	7	8	Total
2003*	97	99	196
2004*	99	96	195
2005*	103	101	204
2006*	91	108	199
2007*	87	92	179
2008*	99	93	192
2009*	77	100	177
2010*	69	75	144
2011*	71	71	142
2012*	74	72	146
2013*	72	78	150
2014*	68	73	141
2015*	77	72	149
2016*	67	77	144
2017	65	69	135
2018	71	68	139
2019	63	73	137
2020	52	65	117
2021	64	53	117
2022	77	66	143
2023	66	80	146
2024	64	68	132
2025	80	66	146
2026	50	82	133
2027	82	52	134
2028	64	84	148

PUBLIC SCHOOL ENROLLMENT PROJECTIONS					
High School					
Boxborough, MA: 2005-2028					
Year	9	10	11	12	Total
2003*	97	100	74	78	349
2004*	97	102	101	75	375
2005*	103	91	101	102	397
2006*	100	104	96	98	398
2007*	116	100	106	97	419
2008*	87	116	100	106	409
2009*	97	88	116	101	402
2010*	108	101	97	115	421
2011*	78	109	99	96	382
2012*	71	74	107	100	352
2013*	72	73	81	106	332
2014*	76	71	75	82	304
2015*	78	78	79	73	308
2016*	77	75	77	73	302
2017	79	77	79	75	310
2018	71	79	81	77	309
2019	69	71	84	79	303
2020	75	69	75	82	302
2021	67	76	73	73	289
2022	55	67	80	71	273
2023	67	55	71	78	271
2024	82	67	58	69	276
2025	70	82	71	56	280
2026	68	70	87	69	294
2027	84	68	74	84	311
2028	54	84	72	72	282

Excludes choice



## Regional Enrollment Including Choice

PUBLIC SCHOOL ENROLLMENT PROJECTIONS											
Elementary School											
ABRSD: 2010-2028											
Year	K-12	K	1	2	3	4	5	6	Total	Choice/ Staff	Total w/ choice/staff
2010*	5,820	368	401	408	405	437	433	464	2,916	47	2,963
2011*	5,712	345	382	407	417	411	441	438	2,841	62	2,903
2012*	5,665	310	364	399	435	417	419	454	2,798	59	2,857
2013*	5,571	316	345	369	420	432	424	422	2,728	66	2,794
2014*	5,463	313	340	359	384	432	435	432	2,695	61	2,756
2015*	5,427	294	350	365	385	395	435	449	2,673	50	2,723
2016*	5,394	323	320	365	388	404	403	456	2,659	56	2,715
2017	5,329	292	355	334	386	397	409	414	2,588	52	2,640
2018	5,259	265	321	370	354	395	402	420	2,528	47	2,575
2019	5,175	297	292	335	391	363	400	412	2,492	45	2,537
2020	5,115	279	327	305	354	401	368	411	2,445	42	2,487
2021	5,099	325	307	341	323	363	406	379	2,444	41	2,485
2022	5,024	294	357	320	360	332	368	417	2,448	43	2,491
2023	4,959	304	323	372	340	369	336	378	2,422	42	2,464
2024	4,942	310	334	337	393	348	373	347	2,443	42	2,485
2025	4,929	318	340	349	357	403	353	383	2,504	42	2,546
2026	4,938	328	350	355	370	366	408	364	2,541	42	2,583
2027	4,960	339	361	365	376	379	371	419	2,610	42	2,652
2028	5,026	350	372	377	387	386	384	382	2,638	42	2,680

PUBLIC SCHOOL ENROLLMENT PROJECTIONS						PUBLIC SCHOOL ENROLLMENT PROJECTIONS							
Junior School						High School							
ABRSD: 2010-2028						ABRSD: 2010-2028							
Year	7	8	Total	Choice/ Staff	Total w/ choice/staff	Year	9	10	11	12	Total	Choice/ Staff	Total w/ choice/staff
2010*	464	476	940	14	954	2010*	510	491	467	496	1964	30	1994
2011*	462	479	941	16	957	2011*	463	524	486	457	1930	27	1957
2012*	449	468	917	18	935	2012*	479	466	526	479	1950	30	1980
2013*	461	454	915	16	931	2013*	466	477	474	511	1928	32	1960
2014*	422	473	895	16	911	2014*	448	471	479	475	1873	32	1905
2015*	441	436	877	11	888	2015*	482	447	476	472	1877	32	1909
2016*	464	438	902	9	911	2016*	441	484	445	463	1833	33	1866
2017	464	471	935	15	950	2017	440	442	487	437	1806	31	1837
2018	422	471	893	21	914	2018	473	441	446	479	1838	24	1862
2019	427	428	855	19	874	2019	472	474	444	438	1828	26	1854
2020	419	434	853	17	870	2020	430	473	477	436	1816	30	1846
2021	418	426	844	16	860	2021	435	431	476	468	1811	34	1845
2022	386	425	811	11	822	2022	427	436	434	468	1765	38	1803
2023	425	392	817	11	828	2023	426	428	439	427	1720	35	1755
2024	385	431	816	13	829	2024	394	427	430	432	1683	28	1711
2025	353	391	744	12	756	2025	433	395	430	423	1680	27	1707
2026	389	359	748	12	760	2026	393	434	399	423	1648	24	1672
2027	371	395	766	12	778	2027	361	393	437	392	1583	23	1606
2028	426	377	804	12	816	2028	396	362	397	429	1584	25	1609

Sources: Acton-Boxborough School System  
 Acton Town Clerk & Building Commissioner  
 Mass. Department of Public Health

\* Actual data

# Update on School Enrollment Projections

2016

Peter K. Ashton  
Mary Ann Ashton

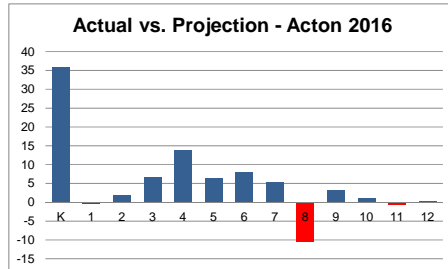
November 3, 2016

## Enrollment Trends

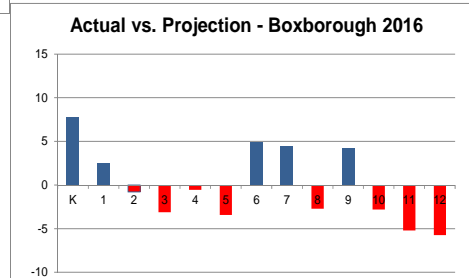
- Enrollment continues to decline slowly
  - Decline of 20 students (-0.5%) in Acton
  - Decline of 13 students (-1.6%) in Boxborough
- Region as a whole experienced a decline of only 33 students which is almost the same decline as last year (less than 1%)
  - Housing turnover has picked up significantly leading to greater in-migration
  - New home construction at about the same rate as last few years
  - Birth rate showing signs of increasing due to in-migration

## Difference between Projection and Actual for 2016

Overall we *under* predicted by 70 students or an error rate of 1.3%



We under predicted kindergarten enrollment in both towns by a combined 44 students - we will show the volatility in the birth to kindergarten ratios later

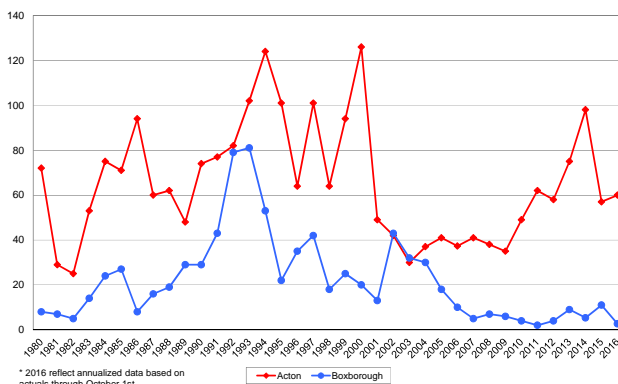


Blue means we under predicted, red means we over predicted, e.g., for Acton kindergarten we predicted 244 and 280 arrived

3

## Building Permits by Town

Single Family Home Permits Issued in Acton and Boxborough 1980-2016\*



\* 2016 reflect annualized data based on actuals through October 1st

Acton Boxborough

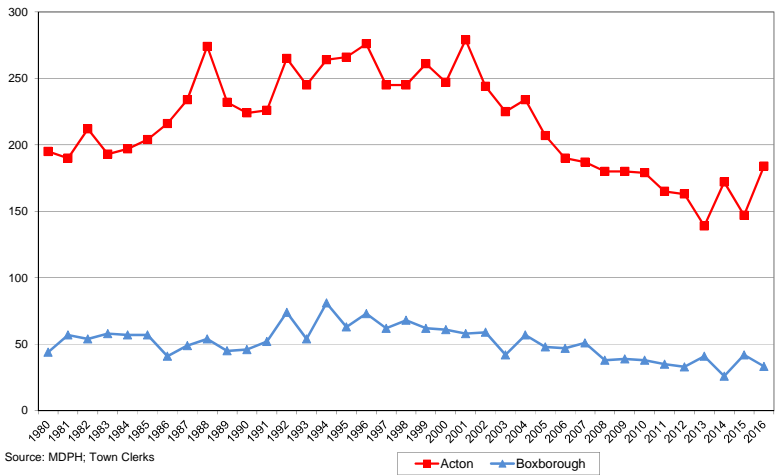
4

- The number of single family permits in Acton has picked up in recent years after a decade long decline
- Boxborough housing permits have been declining since 2002
- New project accounted for



## Births in Acton and Boxborough

1980-2016\*



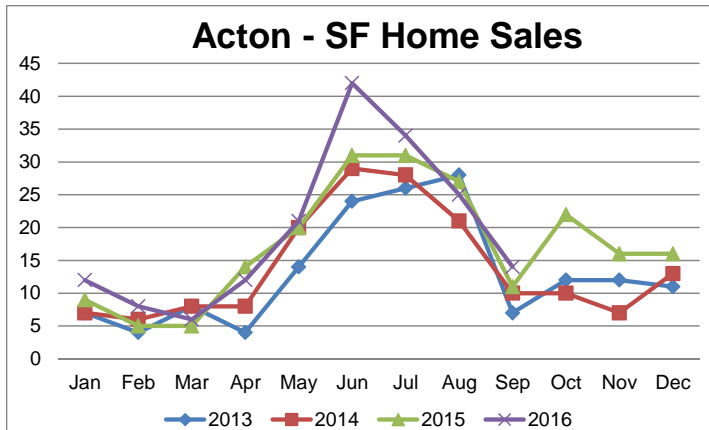
- Declining birth rate since early 2000s; consistent with state-wide trend
- Some increase in Acton 2 of the last 3 years; our birth model suggests some increase in the future as in-migration picks up, but still well below the trend observed in 1990s and early 2000s

5

## Housing Turnover Trends

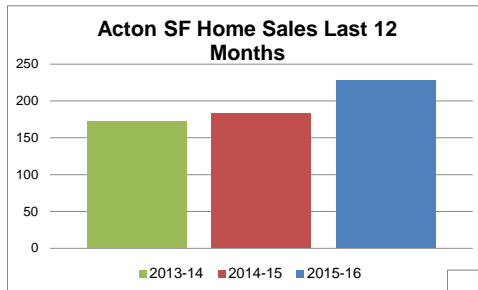
- Major increase in housing turnover
  - On monthly basis, uptick in Acton began in late 2015 and has continued throughout 2016

### Acton - SF Home Sales



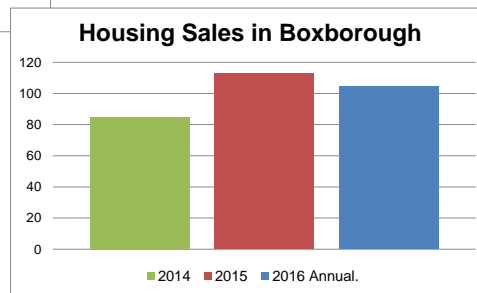
6

## Housing Turnover Trends



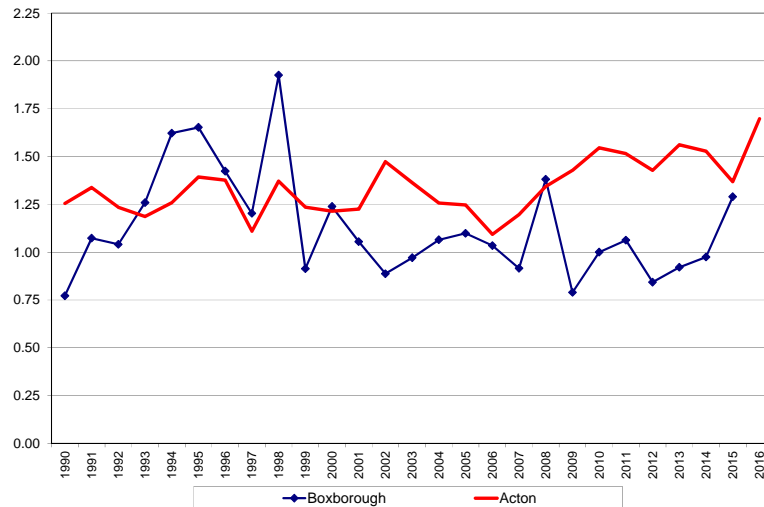
In Acton over last 12 months, housing sales have increased 25% vs. prior 12 month period!  
Similar increase when add in condos

Increase began last year in Boxborough when the town experienced a 33% increase in housing sales and the trend has continued this year.



7

## Comparison of Birth to Kindergarten Ratios



Most volatile of the predictors of enrollment; spreads out by third grade  
Note the increase in both towns due to in-migration

8

## What is the Cohort Survival Method?

- Computes the ratio of children in one grade compared to the number who “survive” to the next grade
  - Starting point is birth to kindergarten ratio
    - based on relationship between kindergarten enrollments and live births five years earlier
  - Grade progression ratios follow the number of children who advance from one grade to the next
  - Relies on birth data and birth projections
  - Captures effects of net migration, population changes, retention rates, housing trends
    - Assumes history is a reasonable predictor of the future
    - Update based on changes in trends, e.g., housing turnover

9

## Enrollment Projections

- Projections developed using “standard” model
  - Include choice/staff only for the region as a whole
- Project separately for two towns given different trends
- Birth projections have been revised again – slight increase from last year reflecting in-migration
- Housing turnover has increased markedly which has most dramatic impact on projections
- Leads to using 4 year average ratios to account for recent trends

10



## Enrollment Projections

- Region-wide enrollment continues to decline through 2025
  - A decline of 465 students region wide vs. today's enrollment
  - This is significantly less than what we projected last year
- Enrollment doesn't begin to increase until 2024 at elementary level
  - Regional elementary enrollment drops by about 240 students between now and 2023; then increases by about 216 students by 2028

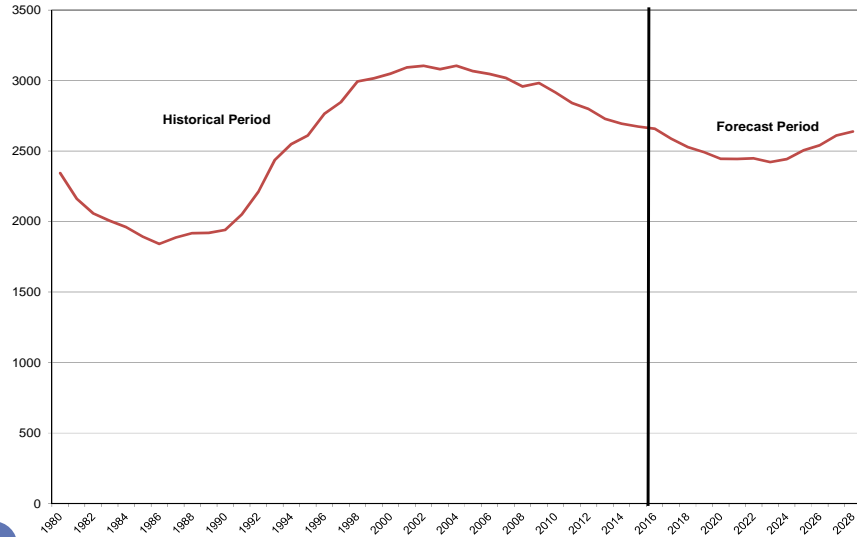
11

## Enrollment Projections

- JHS enrollment hits trough in 2026 at 760 students, a decline of 150 from this year
- SHS continues to drop until 2027; total decline is 650 students
- All of these projections are considerably higher than what we presented last year
  - On average we are projecting about 225 more elementary students per year than we did last year
    - Difference felt most strongly between 2020 and 2025
  - For grades 7-12, the average increase is much smaller, about 30 students more per year, mostly in the "out" years

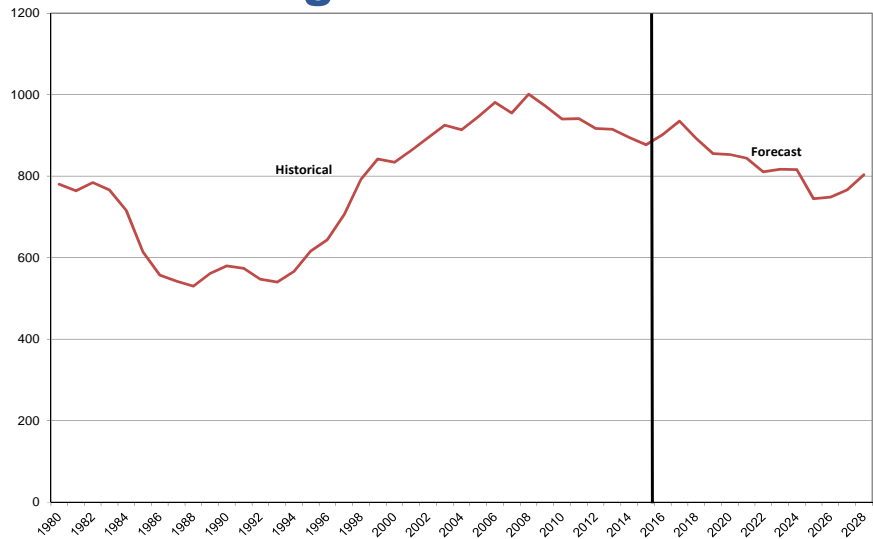
12

## Regional K-6 Enrollment



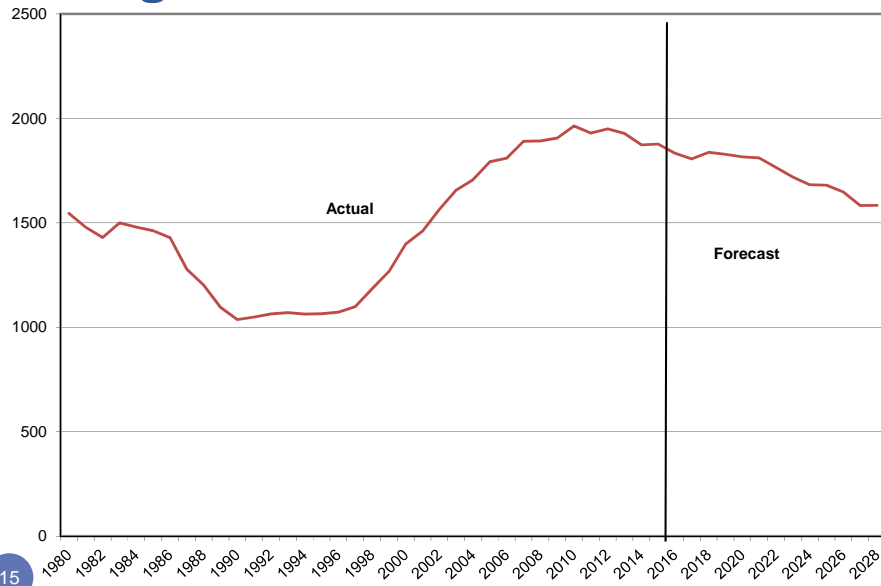
13

## Junior High Enrollment



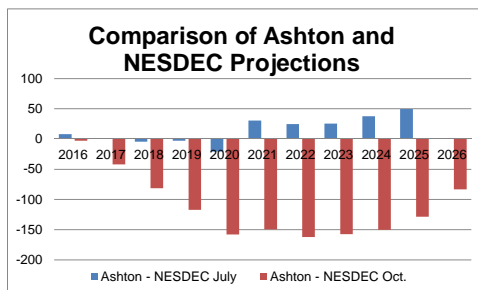
14

## High School Enrollment



15

## Comparison to NESDEC Estimates



- NESDEC has provided several projections over the last few months
- We worked with them and at the time had most confidence in their July 14, 2016 projections
- Now have new estimates as of October 13, 2016
  - These are considerably higher than their July projections and are higher than our current projections

16



## Reasons for Differences

- NESDEC “grows” Choice via multipliers
- NESDEC does not project Acton and Boxborough separately
  - Demographic trends are somewhat different between the towns especially in-migration
- NESDEC has substantially increased the grade to grade ratios it is using and uses a birth to kindergarten ratio that is significantly higher than ours and exceeds anything we have seen in the two towns (especially Boxborough)
- NESDEC projects flat birth rate into the future which mitigates this impact in the “out” years

# Acton-Boxborough, MA Historical Enrollment

School District: Acton-Boxborough, MA Revised

10/19/2016

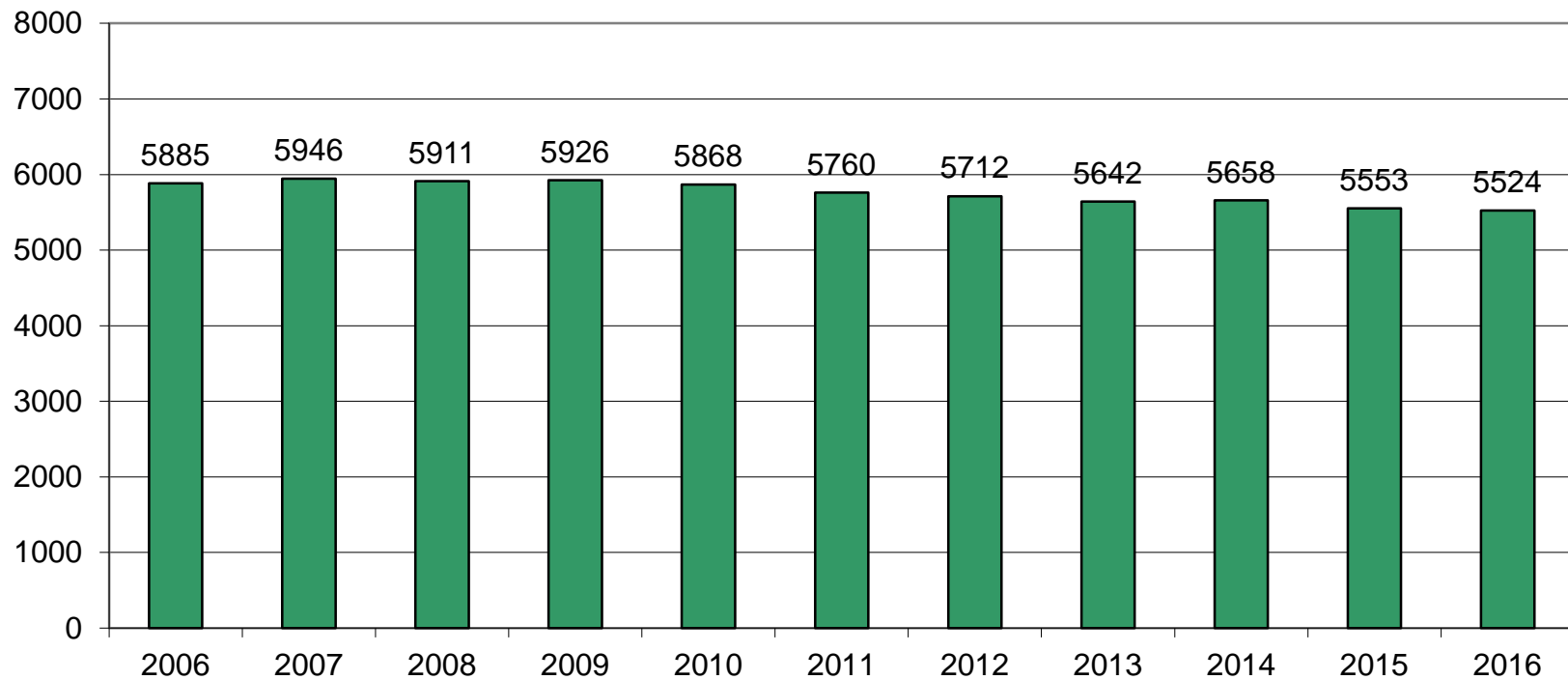
Historical Enrollment By Grade																			
Birth Year	Births	School Year	PK	K	1	2	3	4	5	6	7	8	9	10	11	12	UNGR	K-12	PK-12
2001	337	2006-07	47	365	382	447	443	451	482	477	473	508	445	468	465	432	0	5838	5885
2002	303	2007-08	76	346	390	409	461	462	461	492	485	473	507	445	472	467	0	5870	5946
2003	266	2008-09	60	359	383	408	420	451	476	461	501	500	472	510	442	468	0	5851	5911
2004	291	2009-10	66	379	392	409	424	433	465	480	470	502	499	470	499	438	0	5860	5926
2005	255	2010-11	48	368	401	408	405	437	433	464	464	476	510	491	467	496	0	5820	5868
2006	242	2011-12	48	345	382	407	417	411	441	438	462	479	463	524	486	457	0	5712	5760
2007	238	2012-13	47	310	364	399	435	417	419	454	449	468	479	466	526	479	0	5665	5712
2008	218	2013-14	71	316	345	369	420	432	424	422	461	454	466	477	474	511	0	5571	5642
2009	218	2014-15	102	320	347	367	395	440	441	436	428	479	457	479	486	481	0	5556	5658
2010	217	2015-16	41	299	357	371	393	405	444	453	445	443	488	456	478	480	0	5512	5553
2011	198	2016-17	31	330	324	372	397	412	414	466	469	442	448	492	457	469	1	5493	5524

Historical Enrollment in Grade Combinations									
Year	PK-6	K-5	K-6	K-8	5-8	6-8	7-8	7-12	9-12
2006-07	3094	2570	3047	4028	1940	1458	981	2791	1810
2007-08	3097	2529	3021	3979	1911	1450	958	2849	1891
2008-09	3018	2497	2958	3959	1938	1462	1001	2893	1892
2009-10	3048	2502	2982	3954	1917	1452	972	2878	1906
2010-11	2964	2452	2916	3856	1837	1404	940	2904	1964
2011-12	2889	2403	2841	3782	1820	1379	941	2871	1930
2012-13	2845	2344	2798	3715	1790	1371	917	2867	1950
2013-14	2799	2306	2728	3643	1761	1337	915	2843	1928
2014-15	2848	2310	2746	3653	1784	1343	907	2810	1903
2015-16	2763	2269	2722	3610	1785	1341	888	2790	1902
2016-17	2746	2249	2715	3626	1791	1377	911	2777	1866

Historical Percentage Changes			
Year	K-12	Diff.	%
2006-07	5838	0	0.0%
2007-08	5870	32	0.5%
2008-09	5851	-19	-0.3%
2009-10	5860	9	0.2%
2010-11	5820	-40	-0.7%
2011-12	5712	-108	-1.9%
2012-13	5665	-47	-0.8%
2013-14	5571	-94	-1.7%
2014-15	5556	-15	-0.3%
2015-16	5512	-44	-0.8%
2016-17	5493	-19	-0.3%
Change		-345	-5.9%

# Acton-Boxborough, MA Historical Enrollment

**PK-12, 2006-2016**





# Acton-Boxborough, MA Projected Enrollment

School District: Acton-Boxborough, MA Revised

10/19/2016

Enrollment Projections By Grade*																				
Birth Year	Births		School Year	PK	K	1	2	3	4	5	6	7	8	9	10	11	12	UNGR	K-12	PK-12
2011	198		2016-17	31	330	324	372	397	412	414	466	469	442	448	492	457	469	1	5493	5524
2012	195		2017-18	110	297	363	342	398	413	419	428	477	480	447	453	495	455	1	5468	5578
2013	180		2018-19	111	274	327	383	366	414	420	434	438	488	486	452	456	492	1	5431	5542
2014	198		2019-20	112	301	301	345	410	381	421	435	444	448	494	491	455	454	1	5381	5493
2015	192	(prov.)	2020-21	113	292	331	318	369	427	388	436	445	454	453	500	494	453	1	5361	5474
2016	193	(est.)	2021-22	114	293	321	349	340	384	434	402	446	455	460	458	503	491	1	5337	5451
2017	192	(est.)	2022-23	115	292	322	339	374	354	391	449	411	456	461	465	461	500	1	5276	5391
2018	191	(est.)	2023-24	116	290	321	340	363	389	360	405	460	420	462	466	468	458	1	5203	5319
2019	193	(est.)	2024-25	117	294	319	339	364	378	396	373	414	470	425	467	469	465	1	5174	5291
2020	192	(est.)	2025-26	118	292	323	337	363	379	385	410	382	423	476	430	470	466	1	5137	5255
2021	192	(est.)	2026-27	118	292	321	341	361	378	386	398	420	391	428	481	433	467	1	5098	5216

\*Projections should be updated on an annual basis in order to reflect changes in births, real estate sales, in-/out-migration of families, and housing construction.



Based on an estimate of births



Based on children already born



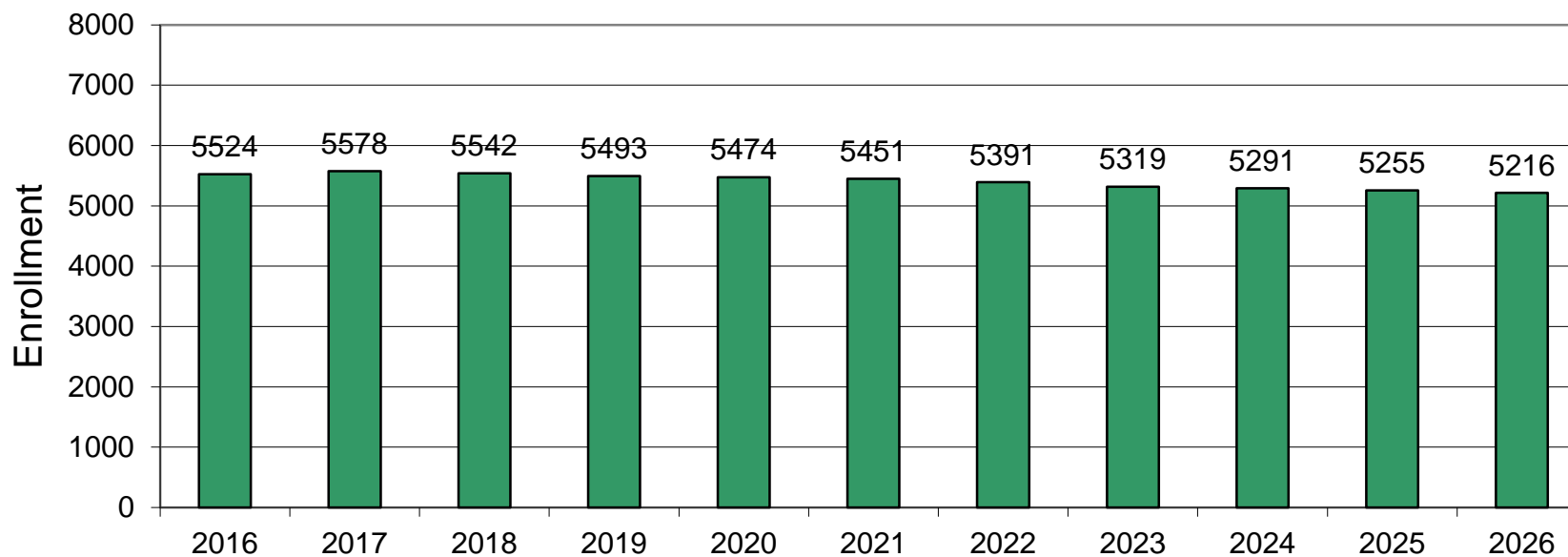
Based on students already enrolled

Projected Enrollment in Grade Combinations*									
Year	PK-6	K-5	K-6	K-8	5-8	6-8	7-8	7-12	9-12
2016-17	2746	2249	2715	3626	1791	1377	911	2777	1866
2017-18	2770	2232	2660	3617	1804	1385	957	2807	1850
2018-19	2729	2184	2618	3544	1780	1360	926	2812	1886
2019-20	2706	2159	2594	3486	1748	1327	892	2786	1894
2020-21	2674	2125	2561	3460	1723	1335	899	2799	1900
2021-22	2637	2121	2523	3424	1737	1303	901	2813	1912
2022-23	2636	2072	2521	3388	1707	1316	867	2754	1887
2023-24	2584	2063	2468	3348	1645	1285	880	2734	1854
2024-25	2580	2090	2463	3347	1653	1257	884	2710	1826
2025-26	2607	2079	2489	3294	1600	1215	805	2647	1842
2026-27	2595	2079	2477	3288	1595	1209	811	2620	1809

Projected Percentage Changes			
Year	K-12	Diff.	%
2016-17	5493	0	0.0%
2017-18	5468	-25	-0.5%
2018-19	5431	-37	-0.7%
2019-20	5381	-50	-0.9%
2020-21	5361	-20	-0.4%
2021-22	5337	-24	-0.4%
2022-23	5276	-61	-1.1%
2023-24	5203	-73	-1.4%
2024-25	5174	-29	-0.6%
2025-26	5137	-37	-0.7%
2026-27	5098	-39	-0.8%
Change		-395	-7.2%

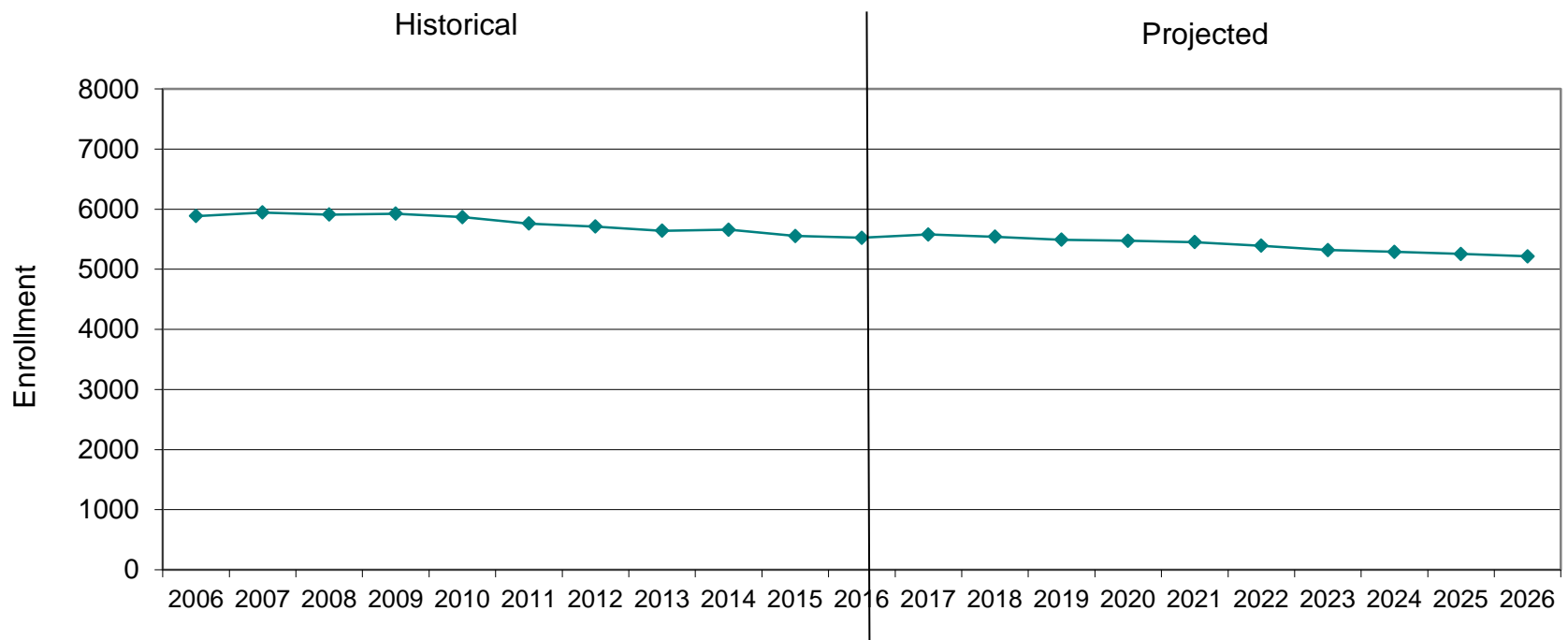
# Acton-Boxborough, MA Projected Enrollment

PK-12 TO 2026 Based On Data Through School Year 2016-17

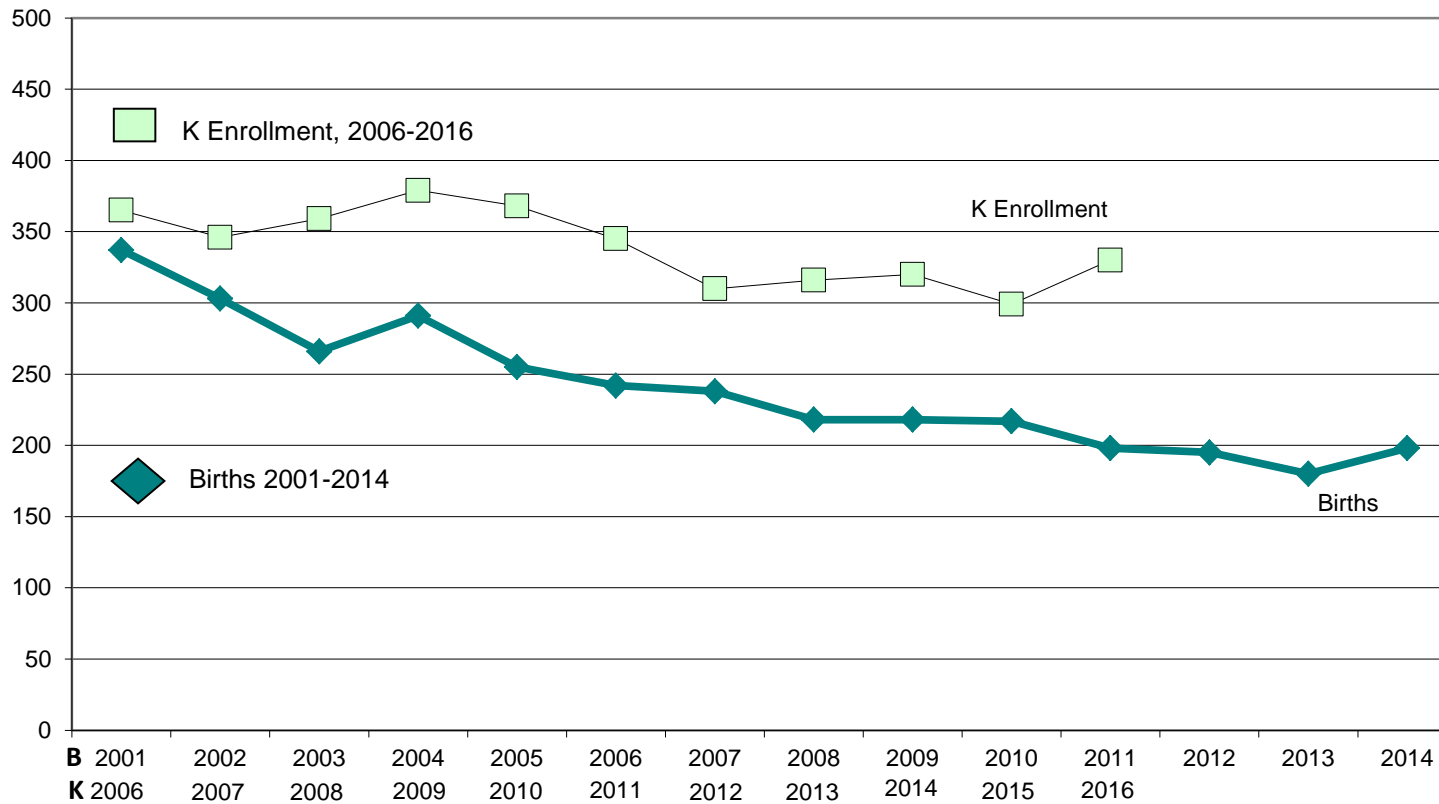


# Acton-Boxborough, MA Historical & Projected Enrollment

### PK-12, 2006-2026



# Acton-Boxborough, MA Birth-to-Kindergarten Relationship



# Acton-Boxborough, MA Additional Data

Building Permits Issued		
Year	Single-Family	Multi-Units
2005	74	0
2012	59	0
2013	88	10
2014	91	8
2015	55A - 11B	4A - 244B
2016	42A - 2B to July	0A - 244B to July

Source: HUD and Building Department

Enrollment History		
Year	Voc-Tech 9-12 Total	Non-Public K-12 Total
2005-06	44	n/a
2012-13	30	n/a
2013-14	29	n/a
2014-15	n/a	185
2015-16	38	n/a
2016-17	43	n/a

Residents in Non-Public Independent and Parochial Schools (General Education)														
Enrollments as of Oct. 1	K	1	2	3	4	5	6	7	8	9	10	11	12	K-12 TOTAL
	n/a	n/a	n/a	n/a	n/a	n/a	n/a	n/a	n/a	n/a	n/a	n/a	n/a	n/a

K-12 Home-Schooled Students	
2016	23

K-12 Residents "Choiced-out" or in Charter or Magnet Schools	
2016	31

K-12 Special Education Outplaced Students	
2016	19

K-12 Choiced-In, Tuitioned-In, & Other Non-Residents	
2016	34

The above data were used to assist in the preparation of the enrollment projections. If additional demographic work is needed, please contact our office.